

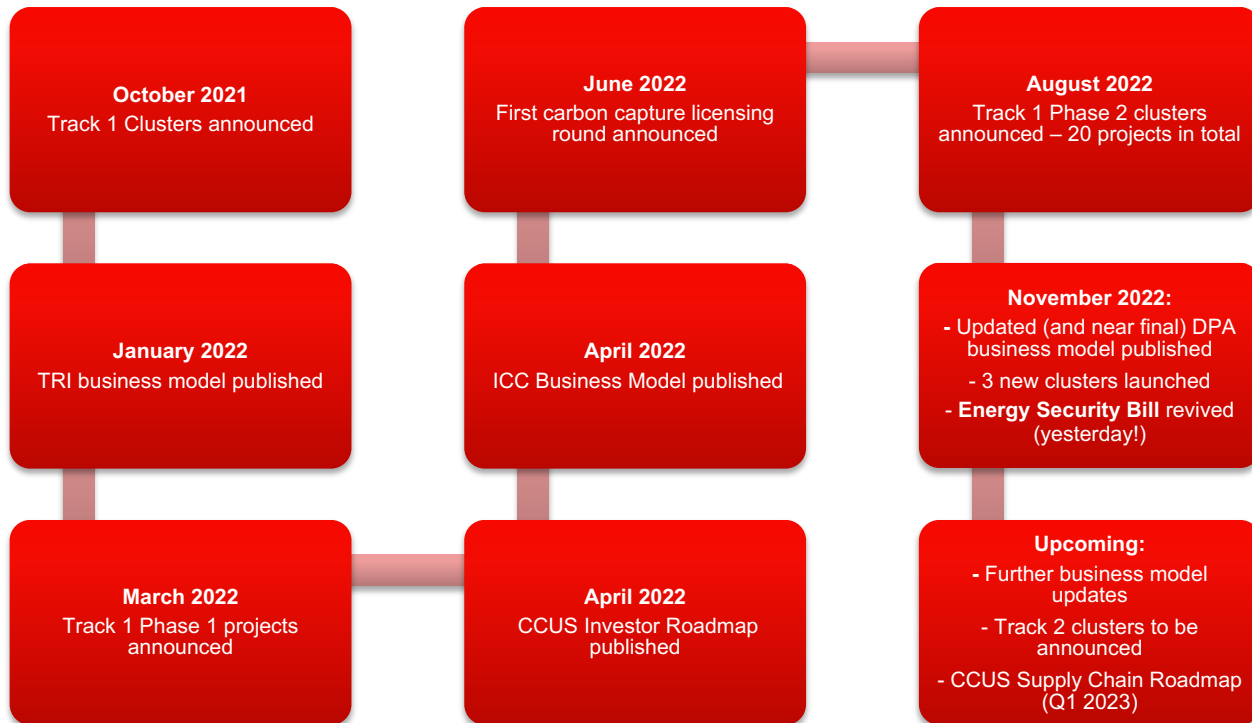
Current status and future development of the UK market for CCUS deployment

Alistair Black
Partner

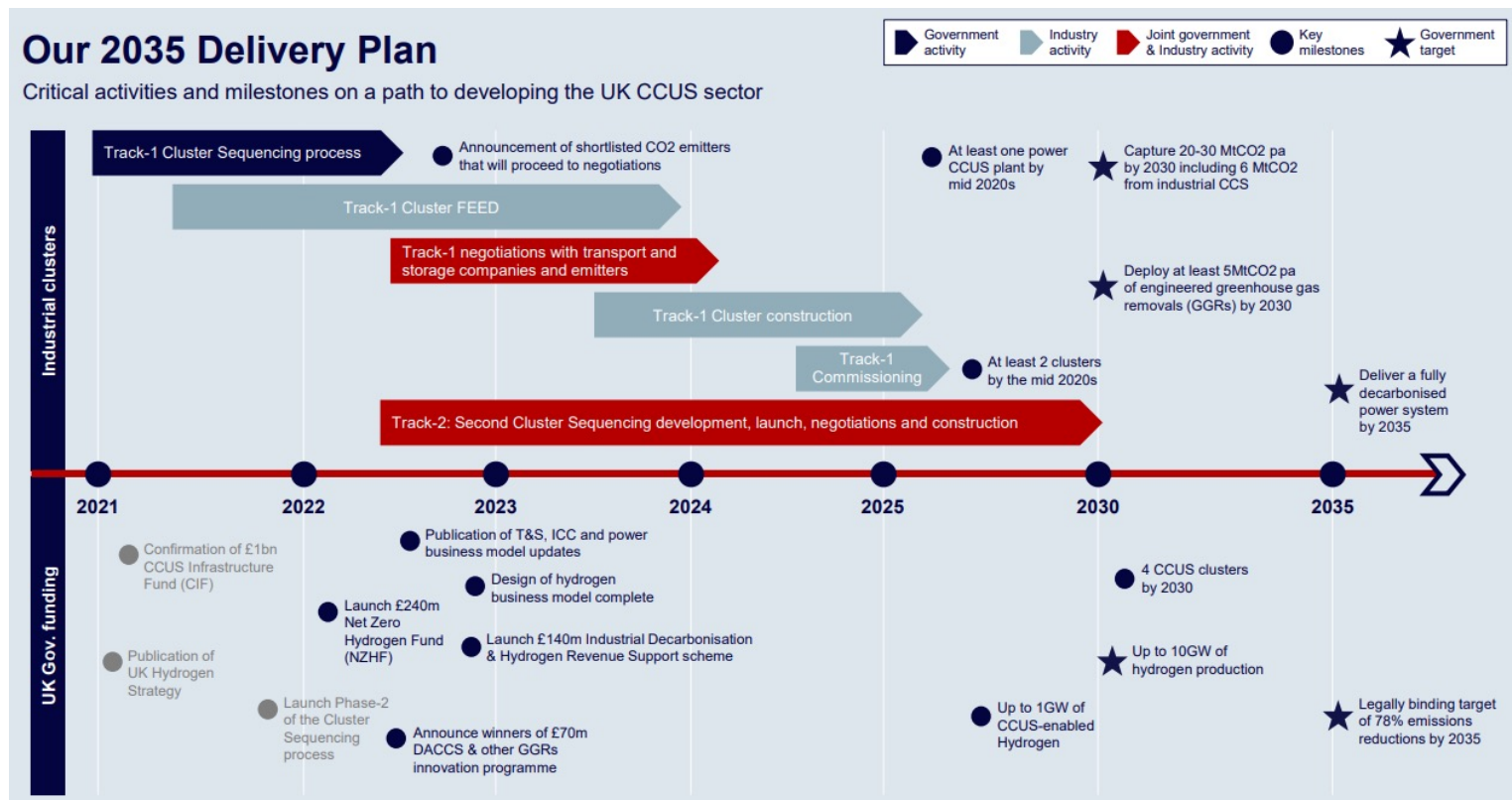
30 November 2022



A busy year for CCUS



UK CCUS Deployment Plan: Where are we now?



CCUS Business Models

The T&S Regulatory Investment model consists of both the regulatory model and other support arrangements which will facilitate investment in T&S infrastructure.

TRI

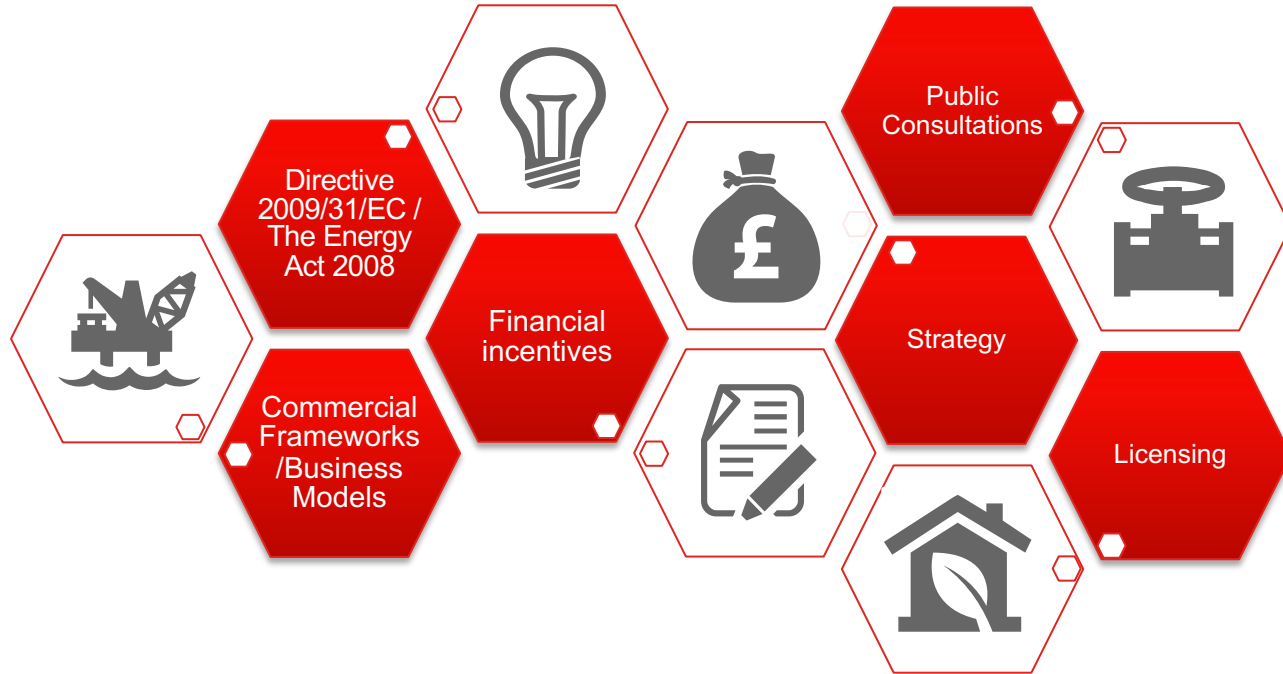
DPA

The Dispatchable Power Business model addresses power generation with CCS, incentivising flexible operation, dispatching after renewables and nuclear, but ahead of other unabated power plants.

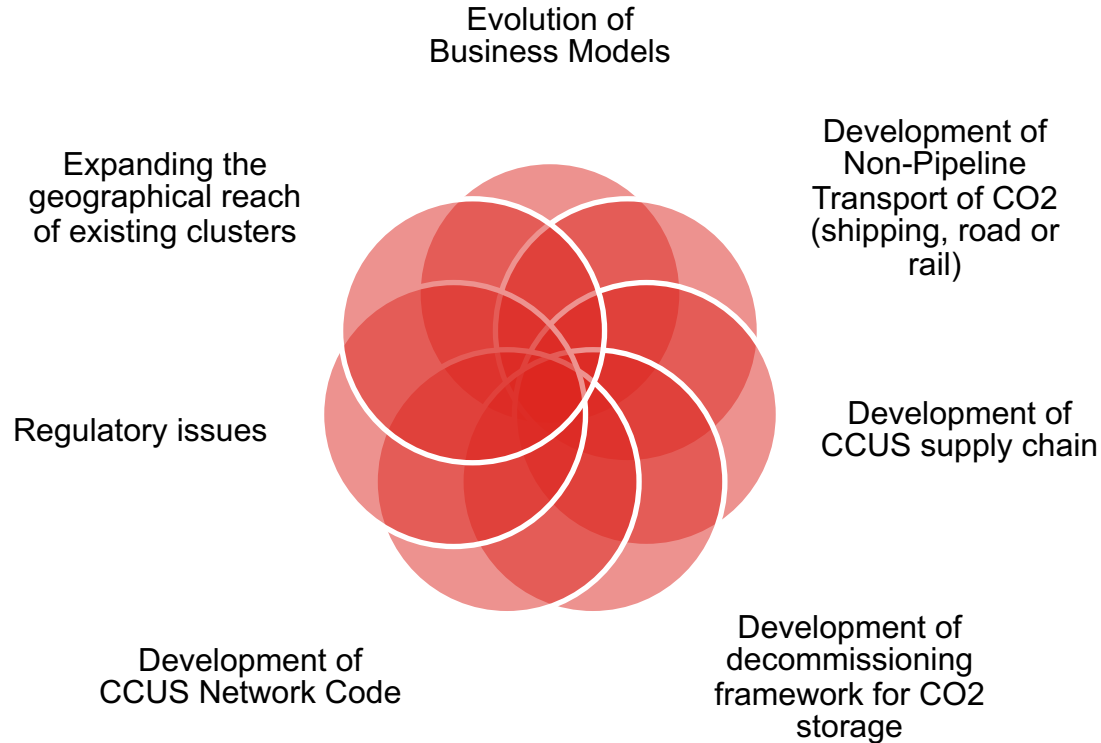
ICC

The Industrial Carbon Capture Model incentivises the deployment of carbon capture technology by industrial users who currently lack viable low or no-carbon alternatives.

UK Policy and Regulatory Framework Developments



Future Developments



Further development – Non Pipeline Transportation

Key to widening reach of individual clusters

- Allow decarbonisation of otherwise ‘stranded’ emitters
- Key challenges:
 - Technical – vessel configuration
 - Commercial – creating a business model that incentivises vessel construction and is aligned with existing risk allocation (e.g. LNG transport)
 - Regulatory:
 - International (cross-border) regulation
 - UK TRI model
- Work continues on these challenges in the CCSA

Contracting for CCUS projects







Law around the world

nortonrosefulbright.com

Norton Rose Fulbright US LLP, Norton Rose Fulbright LLP, Norton Rose Fulbright Australia, Norton Rose Fulbright Canada LLP and Norton Rose Fulbright South Africa Inc are separate legal entities and all of them are members of Norton Rose Fulbright Verein, a Swiss verein. Norton Rose Fulbright Verein helps coordinate the activities of the members but does not itself provide legal services to clients.

References to 'Norton Rose Fulbright', 'the law firm' and 'legal practice' are to one or more of the Norton Rose Fulbright members or to one of their respective affiliates (together 'Norton Rose Fulbright entity/entities'). No individual who is a member, partner, shareholder, director, employee or consultant of, in or to any Norton Rose Fulbright entity (whether or not such individual is described as a 'partner') accepts or assumes responsibility, or has any liability, to any person in respect of this communication. Any reference to a partner or director is to a member, employee or consultant with equivalent standing and qualifications of the relevant Norton Rose Fulbright entity.

The purpose of this communication is to provide general information of a legal nature. It does not contain a full analysis of the law nor does it constitute an opinion of any Norton Rose Fulbright entity on the points of law discussed. You must take specific legal advice on any particular matter which concerns you. If you require any advice or further information, please speak to your usual contact at Norton Rose Fulbright.