

Challenges in (re)directing the investment capital required for the transformations required for 1.5 degrees

Westminster Energy Forum

Amanda Latham



**BARNETT
WADDINGHAM**
beyond the expected

Regulatory information

The information in this presentation is based on our understanding of current taxation law, proposed legislation and HM Revenue & Customs practice, which may be subject to future variation. This presentation is not intended to provide and must not be construed as regulated investment advice. Returns are not guaranteed and the value of investments may go down as well as up.

Barnett Waddingham LLP is authorised and regulated by the Financial Conduct Authority. BW SIPP LLP is authorised and regulated by the Financial Conduct Authority.

Barnett Waddingham

AT A GLANCE

MORE THAN

1,320

DEDICATED PEOPLE

ACROSS

8

UK OFFICES

PROUDLY DEMONSTRATING

32

YEARS OF GROWTH

2019/20

£108m

ANNUAL TURNOVER

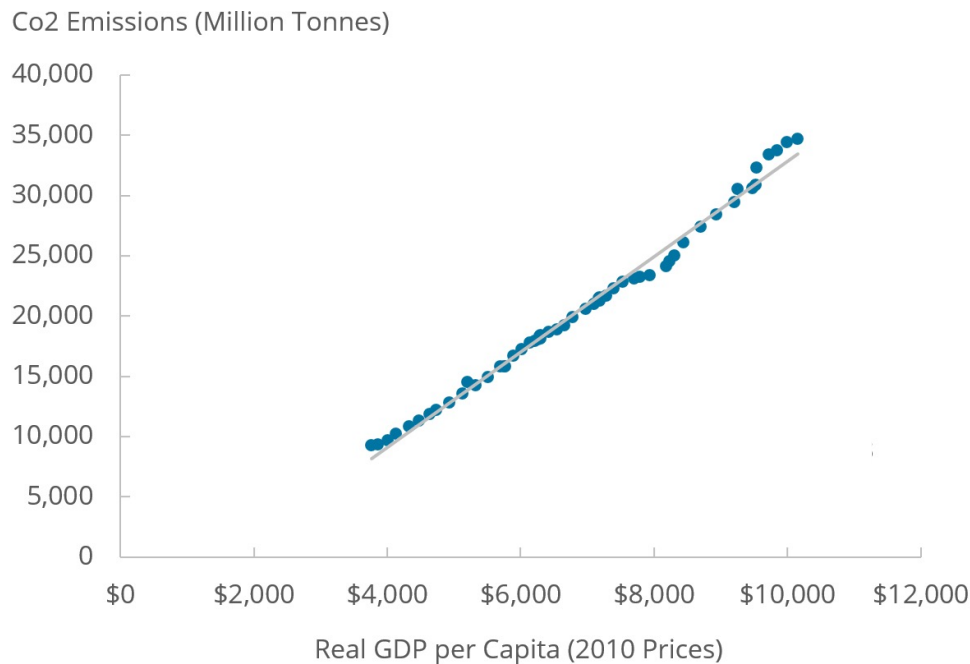


What's on the agenda

- › Correlation between real GDP per head and CO2 emissions
- › Change in consumer ESG activities since 2018

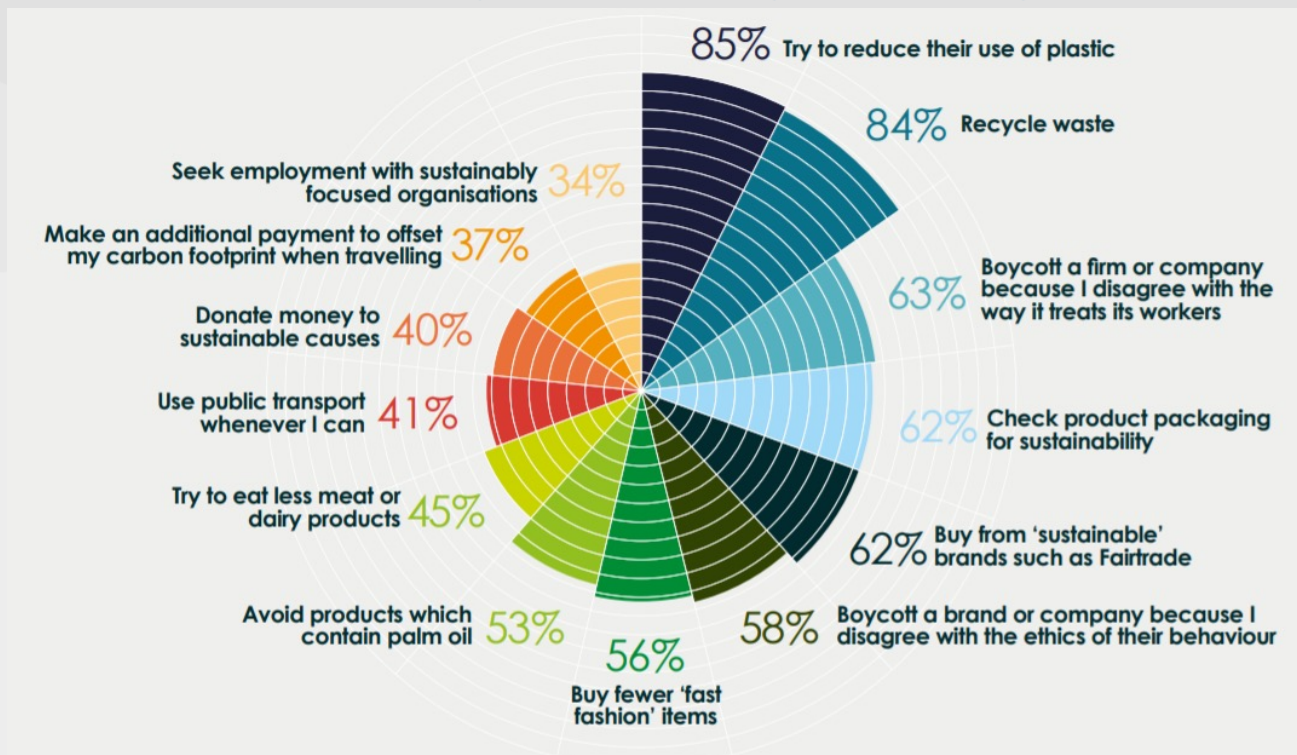


Correlation between real GDP per head and CO2 emissions (tonnes) globally, 1960 to 2014





Change in activities since 2018 (% more likely to undertake the activity than 2 years ago)



Get in touch



amanda.Latham@barnett-waddingham.co.uk



020 7776 3875

www.barnett-waddingham.co.uk

